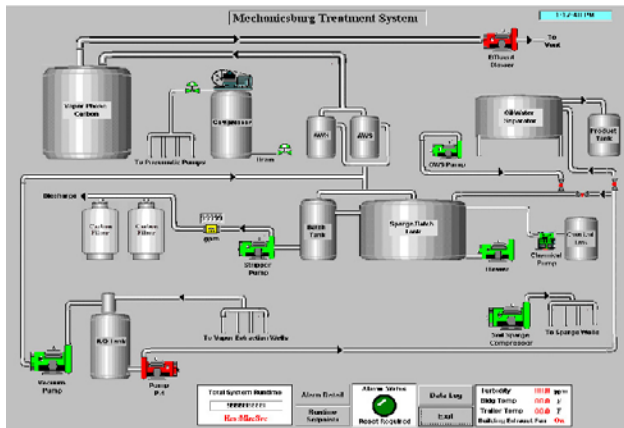


SIMATIC HMI – WinCC FLEXIBLE TRAINING



COURSE OBJECTIVE

To gain an insight into SCADA / HMI Application Systems.

Target Audience

This course is intended for engineers, technicians and service personnel who work with SCADA/HMI controlled processes.

Prerequisites

1. The participant should be Electrical / Electronics / Instrumentation Engineer/Technician or an Engineer/Technician from another branch of Engineering with adequate knowledge in the area of Electrical / Electronics Engineering.
2. Computer knowledge.
3. Competence in PLC programming and configuration.

Course Content

- WinCC Flexible System overview
- creating a project
- creating screens
- configuring alarms
- creating recipes
- adding screen changes
- testing & simulating a project
- logging alarms and process values
- configuring reports
- creating scripts
- configuring user administrator
- configuring communications with PLC

CHARGES: Ksh 35, 000 per person + 16% VAT
Minimum 5 participants.
Cost includes lunch, morning & afternoon tea/snacks.

COURSE DURATION

Three days.

ACCREDITATION

IET is registered with the Department of Industrial Training ref: DIT/TRN/545 as Management Trainers.

IET



International Energy Technik Limited

Representatives of **Siemens Ag**. Power Transmission & Distribution; Automation & Drives.
Unit 90, The Alpha Centre, Mombasa Road, Nairobi, Kenya
P O Box 46215, Tel + 254 (0)2 354 10 82 to 7 Fax + 254 (0)2 35 04 69 OR 82 52 80 E-Mail: info@iet.co.ke